

With All I Am

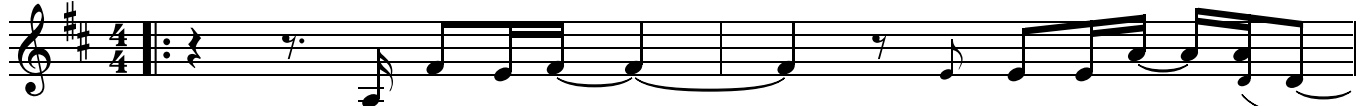
Words and Music by
Reuben Morgan

♩=67

VERSE

D

F#m/C# A/C#



1. In - to Your hands _____ I com - mit _ a - gain _
2. I'll walk with You _____ wher - ev - er You _ go. _____

3 Bm F#m/A G A^{sus} A D



_____ all I _ am _ for You, Lord. _____ You hold my world _____
_____ Through tears and _ joy, _ I'll trust in _ You. _____ And I will live _____

6 F#m/C# A/C# Bm F#m/A G A^{sus} A



_____ in the palm of Your _ hand. _____ And I am _ Yours _ for - ev - er. _____
_____ in _ all of Your _ ways. _____ And Your prom - is - es _____ for - ev - er. _____

CHORUS

§

9 Em A D A/C# G/B



Je - sus, I _ be - lieve _ in You. _____ Je - sus, I _ be - long .

Last time to Coda ⊕

13 D/F# F#m⁷ G Em



_____ to You. _____ You're the rea - son that _ I live, _____ the rea - son that _ I sing .

16 1. 2.

A^{sus} A D D/A A^{sus} A D.S.

with all _ I _ am. Je - sus, I _ be - lieve _

20 3.

A^{sus} A D^{sus} D D² Em⁹

with all _ I _ am.

BRIDGE

24 A^{sus} A D^{sus} D D² Em

I will wor - ship. I will wor - ship _ You..

28 A^{sus} A D^{sus} D A/C# G/B

I will wor - ship. I will wor - ship _ You..

32 A^{sus} A D^{sus} D A/C#

I will wor - ship. I will wor -

35 G/B A^{sus} A D.S. al Coda

- ship _ You. Je - sus, I _ be - lieve _

ENDING

37 Coda A^{sus} A D A/C# G/B

with all _ I _ am.

41 A D^{sus} D A/C#

I will wor - ship. I will wor -

44 G/B

I. A 2. A

- ship You. I will wor -